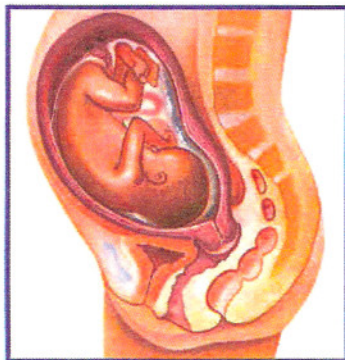


## 26 WEEKS

10 inches — 2.5 pounds



Mouth and lips show more sensitivity.

The eyes are partially open and can perceive light.

Brain wave patterns resemble those of a full term baby at birth.

50% chance of survival with appropriate high risk newborn care.



## 28 WEEKS

10.5 inches — under 3 pounds

The fetus has lungs that are capable of breathing air, although medical help may be needed.

The fetus can open and close its eyes, suck its thumb, cry and respond to sound.

88% chance of survival with appropriate high risk newborn care.