

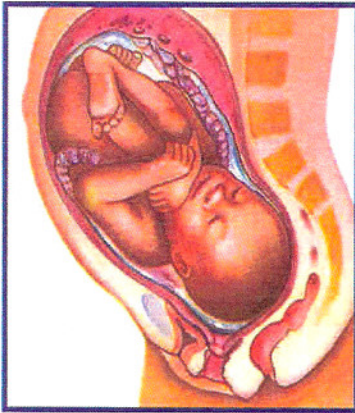
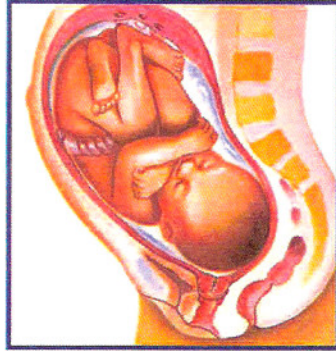
34 WEEKS

12 1/2 inches — 5.5 pounds

Scalp hair is silky and lays against the head.

Muscle tone has now developed and the fetus can turn and lift its head.

95% chance of survival with appropriate high risk newborn care.



36 to 40 WEEKS

13.5 inches and may reach over 20 inches overall, may weigh 6.5 to 10 pounds

Lungs are usually mature.

The fetus can grasp firmly.

Fetus turns toward light sources.

99% chance of survival with appropriate high risk newborn care.